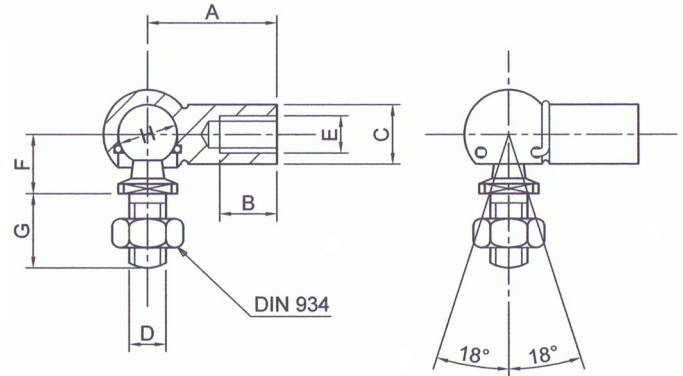


'C' Type Ball Joint Data Sheet

BJC Ball Joint



Part No.	A	B	C	D	E	F	G	H
BJCM05	22	10.2	8	M5	M5	9	10.2	8
BJCM0506	22	10.2	8	M5	M6	9	10.2	8
BJCM06	25	11.5	10	M6	M6	11	12.5	10
BJCM0608	25	11.5	10	M6	M8	11	12.5	10
BJCM08	30	14.0	13	M8	M8	13	16.5	13
BJCM0810	30	14.0	13	M8	M10	13	16.5	13
BJCM10	35	15.5	16	M10	M10	16	20.0	16
BJCM12	35	15.5	16	M12	M12	16	20.0	16

Material:

Ball stud AISI 1045 Carbon Steel, induction hardened.

Housing AISI 1035 Carbon Steel.

Inner retaining ring and safety clip hard drawn spring steel.

Protective Finish:

Zinc plated and passivated. Ball stud, inner retaining ring and safety clip are de-embrittled. The assembly is lubricated.

- Based upon Din Standard 71802.
- The ball stud is retained by a captive internal wire ring with additional stud
- retention security provided by the external wire safety clip.
- For improved wear resistance, the ball is induction hardened.
- If a fitted gaiter is required then the suffix 'G' should be added to the part number e.g. BJCMG10.

Loading:

Part No.	Static Load (N)	Dynamic Load (N)	Pull Out Load (N)
BJCM05	500	200	30
BJCM0506	500	200	30
BJCM06	1,000	400	40
BJCM0608	1,000	400	40
BJCM08	2,000	800	60
BJCM0810	2,000	800	60
BJCM10	4,000	1,600	80
BJCM12	4,000	1,600	80

RollerTek Ltd
 47 Southalls Way
 Norwich
 NR3 4SA
 Phone: 01603 926326
 E-mail: mark@rollertek.co.uk
 Web: www.rollertek.co.uk

Co. Reg. No. 6691519
 VAT Reg. No. 944 7714 93