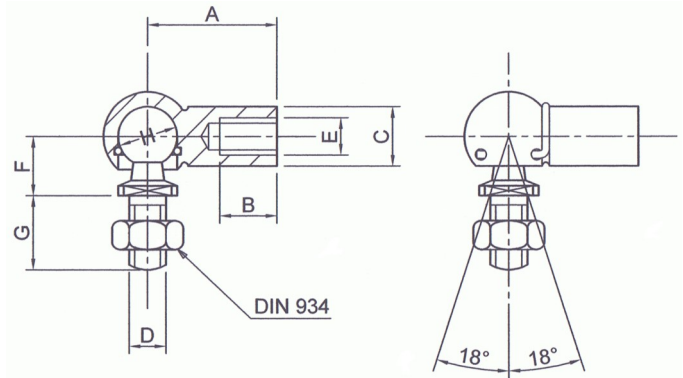


'C' Type Ball Joint Data Sheet (Specials)

BJC Ball Joint



Part No.	A	B	C	D	E	F	G	H
BJCM0506R250	22	10.2	8	1/4"UNC	M6	8	10	8
BJCM0608R312	25	11.5	10	5/16"UNC	M8	11	12	10
BJCM0806	30	14.0	13	M6	M10	13	16	13
BJCM08x25	25	11.0	16	M8	M8	16	19	13
BJCM0810R312	30	14.0	13	5/16"UNC	M10	13	16	13
BJCM10R375	35	15.5	16	3/8"UNC	M10	16	19	16

Material:

Ball stud AISI 1045 Carbon Steel, induction hardened.

Housing AISI 1035 Carbon Steel.

Inner retaining ring and safety clip hard drawn spring steel.

Protective Finish:

Zinc plated and passivated. Ball stud, inner retaining ring and safety clip are de-embrittled. The assembly is lubricated.

- Based upon Din Standard 71802.
- The ball stud is retained by a captive internal wire ring with additional stud retention security provided by the external wire safety clip.
- For improved wear resistance, the ball is induction hardened.
- If a fitted gaiter is required then the suffix 'G' should be added to the part number e.g. BJCMG10.

Loading:

Part No.	Static Load (N)	Dynamic Load (N)	Pull Out Load (N)
BJCM0506R250	500	200	30
BJCM0608R312	1,000	400	40
BJCM0806	2,000	800	60
BJCM08x25	2,000	800	60
BJCM0810R312	2,000	800	60
BJCM10R375	4,000	1,600	80

RollerTek Ltd
 47 Southalls Way
 Norwich
 NR3 4SA
 Phone: 01603 926326
 E-mail: mark@rollertek.co.uk
 Web: www.rollertek.co.uk

Co. Reg. No. 6691519
 VAT Reg. No. 944 7714 93