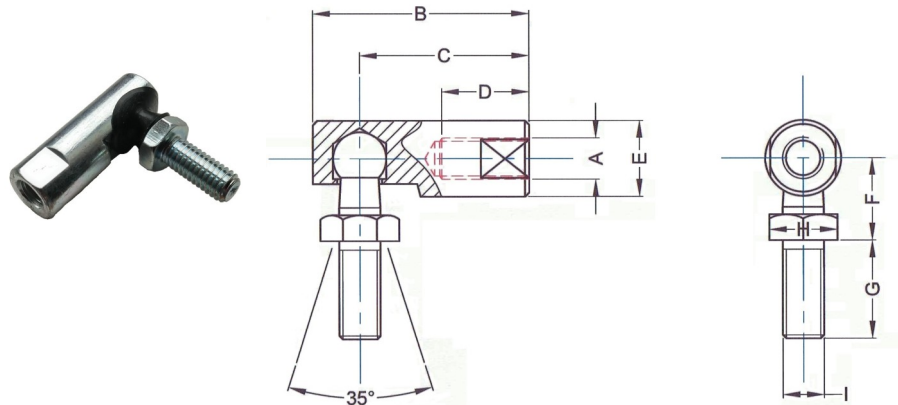


'F' Type Metric Ball Joint Data Sheet

BJFM Ball Joint



Part No.	A	B	C	D	E	F	G	H	I
BJFM06	M6	31.4	24.6	12.7	11	11.9	14.2	10	M6
BJFM08	M8	36.1	28.4	14.2	13	13.5	17.5	13	M8
BJFM0806	M8	36.1	28.4	14.2	13	11.9	14.2	10	M6
BJFM10	M10	43.3	35.0	19.0	16	17.5	22.2	13	M10
BJFM12	M12	60.9	49.2	25.4	19	22.2	28.6	17	M12

Material:

Ball stud AISI 1045 Carbon Steel, induction hardened.
Housing AISI 1035 Carbon Steel.

Protective Finish:

Zinc plated and passivated. Ball stud de-embrittled.
The assembly is lubricated.

- Based upon SAE J 490 Standard .
- For improved wear resistance, the ball is induction hardened.
- Gaiter is fitted as standard.
- If 303/304 Stainless Steel is required the suffix 'SS' should be added to the part number e.g. BJFM08SS.
- If Marine grade 316 Stainless Steel is required the suffix 'SS316' should be added to the part number e.g. BJFM08SS316.

RollerTek Ltd
47 Southalls Way
Norwich
NR3 4SA
Phone: 01603 926326
E-mail: mark@rollertek.co.uk
Web: www.rollertek.co.uk

Co. Reg. No. 6691519
VAT Reg. No. 944 7714 93