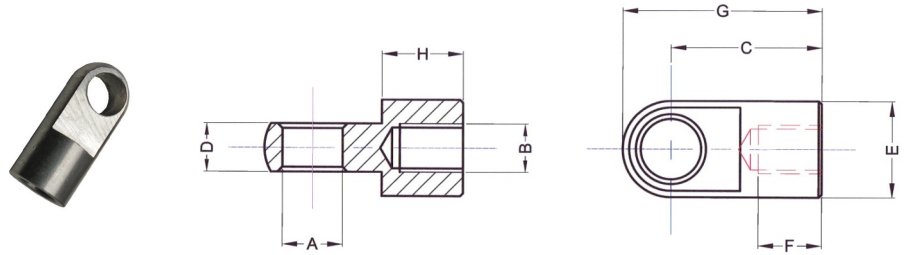


# Clevis Eye Data Sheet

## EM Clevis Eye



Part Number	A	B	C	D	E Dia.	F	G	H
EM04x12	4.1	M4x0.7	12.0	4.0	8		16.0	5.0
EM06x16	6.1	M6x1.0	16.0	6.0	10		19.0	7.0
EM06x17	6.2	M6x1.0	17.5	6.1	10	11.0	22.5	8.5
EM06x19	6.5	M6x1.0	19.0	5.0	12	8.0	25.0	10.4
EM06x26	6.1	M6x1.0	26.0	5.0	14		33.0	14.0
EM06x26/1	8.1	M6x1.0	26.0	5.0	14		33.0	14.0
EM08x19	8.1	M8x1.25	19.0	10.0	15		26.5	6.0
EM08x21	8.2	M8x1.25	21.5	9.0	14	14.0	28.5	11.5
EM08x25	10.1	M8x1.25	25.0	8.0	16	10.5	33.0	13.5
EM08x30	8.1	M8x1.25	30.0	10.0	18		39.0	14.0
EM08x30/1	10.1	M8x1.25	30.0	10.0	18		39.0	14.0
EM10x30	10.1	M10x1.5	30.0	10.0	18		39.0	14.0
EM14x27	14.1	M14x1.5	27.0	14.0	22		38.0	10.0
EM14x38	14.1	M14x1.5	38.0	14.0	22		48.0	21.0
EM14x42	14.2	M14x1.5	42.0	14.0	25	17.0	54.5	22.0

Material:

AISI 1020 Low Carbon Steel.

Protective Finish:

Zinc and Clear Trivalent plated.  
RoHS Compliant.

If 303/304 Stainless Steel is required the suffix 'SS' should be added to the part number e.g. EM08x30SS.

If Marine grade 316 Stainless Steel is required the suffix 'SS316' should be added to the part number e.g. EM08x30SS316.

If A380 Aluminium is required the suffix 'AL' should be added to the part number e.g. EM08x30AL.

RollerTek Ltd  
47 Southalls Way  
Norwich  
NR3 4SA  
Phone: 01603 926326  
E-mail: mark@rollertek.co.uk  
Web: www.rollertek.co.uk

Co. Reg. No. 6691519  
VAT Reg. No. 944 7714 93