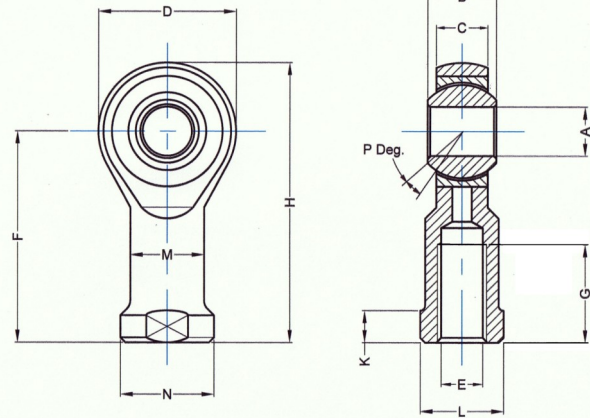


# Female PTFE Rod End DIN648 Data Sheet

## REFPM Female PTFE Rod End



Part No.	A	B	C	D	E	F	G	H	K	L	M	N
REFPM05	5	8	7.5	18	M5	27	8	36	4	10	9	12
REFPM06	6	9	7.5	20	M6	30	9	40	5	10	10	13
REFPM08	8	12	9.5	24	M8	36	12	48	5	13	12.5	16
REFPM10	10	14	11.5	30	M10	43	15	58	6.5	16	15	19
REFPM12	12	16	12.5	34	M12	50	18	67	6.5	18	17.5	22
REFPM14	14	19	14.5	38	M14	57	21	76	8	21	20	25
REFPM16	16	21	15.5	42	M16	64	24	85	8	24	22	27
REFPM18	18	23	17.5	46	M18	71	27	94	10	27	25	31
REFPM20	20	25	18.5	50	M20	77	30	102	10	30	27.5	34
REFPM22	22	28	21	56	M22	84	33	112	12	34	30	37
REFPM25	25	31	23	60	M24	94	36	124	12	36	33.5	42
REFPM28	28	35	26	66	M27	103	41	136	14	41	37	46
REFPM30	30	37	27	70	M30	110	45	146	15	46	40	50

Material:  
Housing AISI 1045 Carbon Steel.  
Race Housing H62 Brass.  
Ball AISI 52100 Bearing Steel.

Protective Finish:  
Zinc plated and passivated, RoHS Compliant

- Based upon Din Standard 648.
- PTFE Liner gives this Rod End self lubricating properties with excellent chemical and corrosion resistance.
- If a left hand thread is required the suffix 'L' should be added to the part number e.g. REFPM10L

Part No.	P Deg.	Dynamic Load kN	Static Load kN	Weight kg
REFPM05	4	3.6	4.6	0.020
REFPM06	9	4.7	5.2	0.025
REFPM08	12	7.6	8.2	0.047
REFPM10	10	12	15	0.088
REFPM12	12	14	19	0.14
REFPM14	14	19	24	0.20
REFPM16	14	23	29	0.25
REFPM18	13	29	34	0.35
REFPM20	14	34	40	0.43
REFPM22	14	42	50	0.61
REFPM25	14	52	57	0.81
REFPM28	14	66	69	1.2
REFPM30	15	73	77	1.4

RollerTek Ltd  
47 Southalls Way  
Norwich  
NR3 4SA  
Phone: 01603 926326  
E-mail: mark@rollertek.co.uk  
Web: www.rollertek.co.uk

Co. Reg. No. 6691519  
VAT Reg. No. 944 7714 93