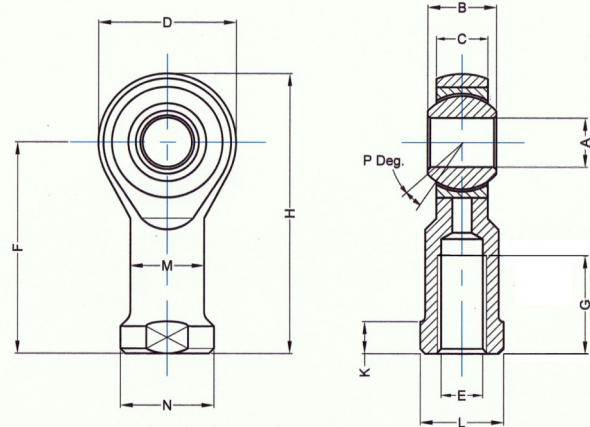


# Female Stainless Steel PTFE Rod End DIN648 Data Sheet

## REFPM Female Stainless Steel PTFE Rod End



Part No.	A	B	C	D	E	F	G	H	K	L	M	N
REFPM05SS	5	8	7.5	18	M5	27	8	36	4	10	9	12
REFPM06SS	6	9	7.5	20	M6	30	9	40	5	10	10	13
REFPM08SS	8	12	9.5	24	M8	36	12	48	5	13	12.5	16
REFPM10SS	10	14	11.5	30	M10	43	15	58	6.5	16	15	19
REFPM12SS	12	16	12.5	34	M12	50	18	67	6.5	18	17.5	22
REFPM14SS	14	19	14.5	38	M14	57	21	76	8	21	20	25
REFPM16SS	16	21	15.5	42	M16	64	24	85	8	24	22	27
REFPM18SS	18	23	17.5	46	M18	71	27	94	10	27	25	31
REFPM20SS	20	25	18.5	50	M20	77	30	102	10	30	27.5	34
REFPM22SS	22	28	21	56	M22	84	33	112	12	34	30	37
REFPM25SS	25	31	23	60	M24	94	36	124	12	36	33.5	42
REFPM28SS	28	35	26	66	M27	103	41	136	14	41	37	46
REFPM30SS	30	37	27	70	M30	110	45	146	15	46	40	50

Material:  
Housing AISI 304 Stainless Steel.  
Race Housing AISI 304 Stainless Steel.  
Ball AISI 440C Bearing Steel.

- Based upon Din Standard 648.
- PTFE Liner gives this Rod End self lubricating properties with excellent chemical and corrosion resistance.
- If a left hand thread is required the suffix 'L' should be added to the part number e.g. REFPM10SS

Part No.	P Deg.	Dynamic Load kN	Static Load kN	Weight kg
REFPM05SS	4	3.6	4.6	0.020
REFPM06SS	9	4.7	5.2	0.025
REFPM08SS	12	7.6	8.2	0.047
REFPM10SS	10	12	15	0.088
REFPM12SS	12	14	19	0.14
REFPM14SS	14	19	24	0.20
REFPM16SS	14	23	29	0.25
REFPM18SS	13	29	34	0.35
REFPM20SS	14	34	40	0.43
REFPM22SS	14	42	50	0.61
REFPM25SS	14	52	57	0.81
REFPM28SS	14	66	69	1.2
REFPM30SS	15	73	77	1.4

RollerTek Ltd  
47 Southalls Way  
Norwich  
NR3 4SA  
Phone: 01603 926326  
E-mail: mark@rollertek.co.uk  
Web: www.rollertek.co.uk

Co. Reg. No. 6691519  
VAT Reg. No. 944 7714 93