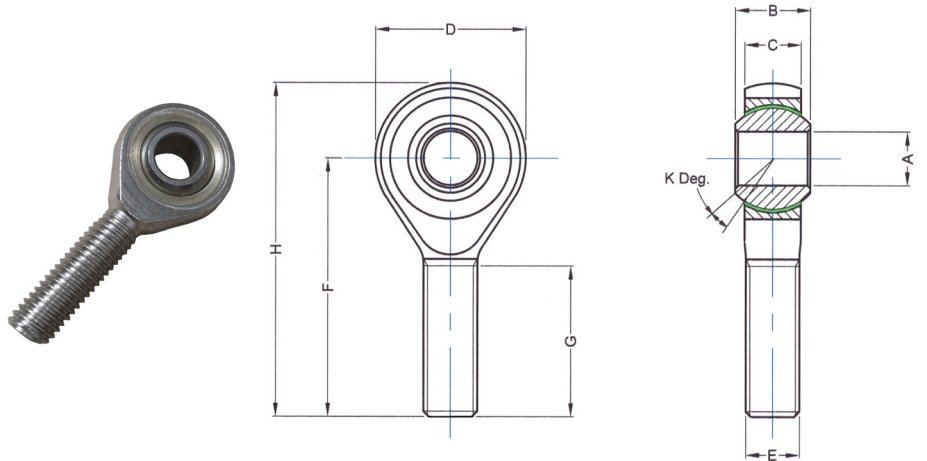


Male PTFE Rod End DIN648 Data Sheet

REMPM Male Stainless Steel PTFE Rod End



Part No.	A	B	C	D	E	F	G	H	K	Load kN Dy- namic	Load kN Static
REMPM05SS	5	8	6	18	M5	33	19	42	13	5.7	6
REMPM06SS	6	9	6.75	20	M6	36	21	46	13	7.2	7.65
REMPM08SS	8	12	9	24	M8	42	25	54	14	11.6	12.9
REMPM10SS	10	14	10.5	28	M10	48	28	62	13	14.5	18
REMPM12SS	12	16	12	32	M12	54	32	70	13	17	24
REMPM14SS	14	19	13.5	36	M14	60	36	78	16	24	31
REMPM16SS	16	21	15	42	M16	66	37	87	15	28.5	39
REMPM18SS	18	23	16.5	44	M18	72	41	94	15	42.5	47.5
REMPM20SS	20	25	18	50	M20	78	45	103	14	42.5	57
REMPM22SS	22	28	20	54	M22	84	48	111	15	57	68
REMPM25SS	25	31	22	60	M24	94	55	124	15	68	85
REMPM28SS	28	35	24	66	M27	103	62	136	15	86	107
REMPM30SS	30	37	25	70	M30	110	66	145	17	88	114
REMPM35SS	35	43	28	81	M36	140	85	180.5	16		
REMPM40SS	40	49	33	91	M42	150	90	195.5	17		
REMPM50SS	50	60	45	117	M48	185	105	243.5	12		

Material:
Housing AISI 304 Stainless Steel.
Race Housing AISI 304 Stainless Steel.
Ball AISI 440C Bearing Steel.

- Based upon Din Standard 648.
- PTFE Liner gives this Rod End self lubricating properties with excellent chemical and corrosion resistance.
- If a left hand thread is required the suffix 'L' should be added to the part number e.g. REMPML10SS.

RollerTek Ltd
47 Southalls Way
Norwich
NR3 4SA
Phone: 01603 926326
E-mail: mark@rollertek.co.uk
Web: www.rollertek.co.uk

Co. Reg. No. 6691519
VAT Reg. No. 944 7714 93