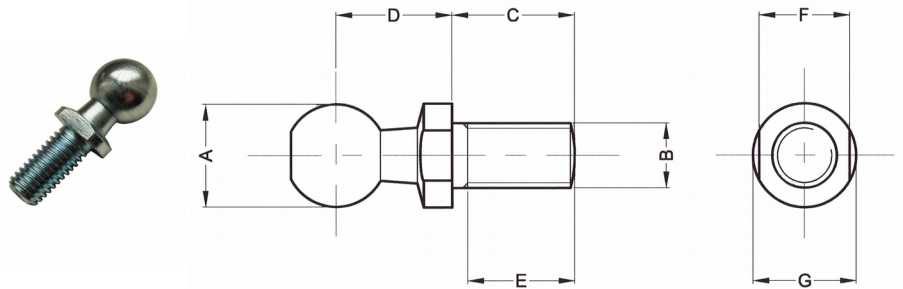


# Ball Joint Stud DIN71803 Data Sheet

## BJC Ball Joint Stud



Part No.	A	B	C	D	E	F	G	Weight gm.
BJCM05B	8	M5x0.8	10.2	9	8.7	7	8	4.6
BJCM06B	10	M6x1.0	12.5	11	11	8	10	8.3
BJCM08B	13	M8x1.25	16.5	13	14.5	11	13	17.7
BJCM10B	16	M10x1.5	20	16	18	13	16	35.1
BJCM10Bx30	16	M10x1.5	30	16	28	13	16	45
BJCM12B	16	M12x1.75	20	16	18	13	16	36
BJCM14B	19	M14x2.0	28	20	26	16	19	71
BJCM14BF	19	M14x1.5	28	20	26	16	19	71
BJCM16B	19	M16x2.0	28	20	26	16	19	74

Material:  
Housing AISI 1034 Carbon Steel.

Protective Finish:  
Zinc and Clear Trivalent plated, passivated and de-embrittled.

Based upon Din Standard 71803.

If 303/304 Stainless Steel is required the suffix 'SS' should be added to the part number e.g. BJCM08SSB.

If Marine grade 316 Stainless Steel is required the suffix 'SS316' should be added to the part number e.g. BJCM08SSB316.

RollerTek Ltd  
47 Southalls Way  
Norwich  
NR3 4SA  
Phone: 01603 926326  
E-mail: mark@rollertek.co.uk  
Web: www.rollertek.co.uk

Co. Reg. No. 6691519  
VAT Reg. No. 944 7714 93