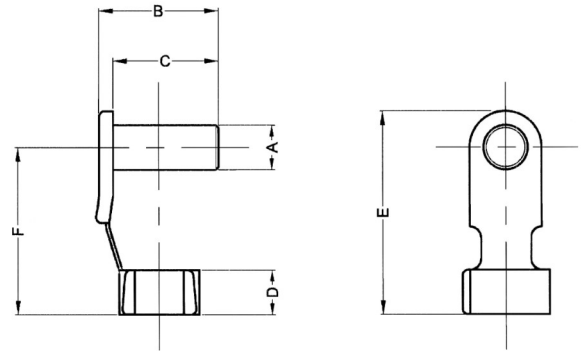


Metric Spring Pin Data Sheet

Metric Spring Pin



Part No.	A	B	C	D	E	F
PSM04	4.00 / 3.93	11.0	9.5	4.5	18.5	15
PSM05	5.00 / 4.93	13.5	12.0	5.5	23	19
PSML05	5.00 / 4.93	13.5	12.0	5.5	33	29
PSM06	6.00 / 5.93	16.0	14.0	6.5	28	23
PSML06	6.00 / 5.93	16.0	14.0	6.5	40	35
PSM08	8.00 / 7.91	21.5	19.0	8.0	36.5	30
PSML08	8.00 / 7.91	21.5	19.0	8.0	52	46
PSM10	10.00 / 9.91	26.0	23.0	10.0	45	38
PSML10	10.00 / 9.91	26.0	23.0	10.0	65	58
PSM12	12.00 / 11.89	31.0	28.0	12.0	53	45
PSML12	12.00 / 11.89	31.0	28.0	12.0	78	69

Compatible with CM and CML Clevis

Material:

Pin AISI 1020 Low Carbon Steel

Spring CS70 Carbon Steel, Hardened and Tempered

Protective Finish:

Zinc and Clear Trivalent Plated, De-Embrittled

RoHS Compliant

RollerTek Ltd
 47 Southalls Way
 Norwich
 NR3 4SA
 Phone: 01603 926326
 E-mail: mark@rollertek.co.uk
 Web: www.rollertek.co.uk

Co. Reg. No. 6691519
 VAT Reg. No. 944 7714 93