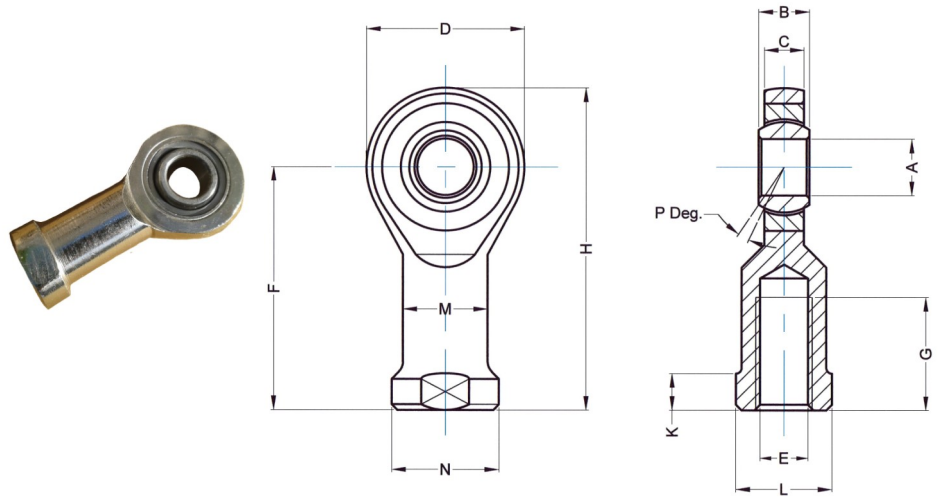


# Female PTFE Rod End Narrow Series Data Sheet

## REFPMN Female PTFE Rod End



Part No.	A H7	B	C	D	E	F	G	H	K	L	M	N
REFPMN06	6	6	4.4	21	M6	30	11	40.5	5	11	10	13
REFPMN08	8	8	6	24	M8	36	15	48	5	14	12.5	16
REFPMN10	10	9	7	29	M10	43	20	57.5	6.5	17	15	19
REFPMN12	12	10	8	34	M12	50	23	67	6.5	19	17.5	22
REFPMN15	15	12	10	40	M14	61	30	81	8	22	21	26
REFPMN17	17	14	11	46	M16	67	34	90	10	27	24	30
REFPMN20	20	16	13	53	M20	77	40	103.5	10	33	27.5	35
REFPMN25	25	20	17	64	M24	94	48	126	12	36	33.5	42
REFPMN30	30	22	19	73	M30	110	56	146.5	15	41	40	50

Material:  
 Housing AISI 1045 Carbon Steel.  
 Race Housing H62 Brass.  
 Ball AISI 52100 Bearing Steel.

Protective Finish:  
 Zinc plated and passivated, RoHS Compliant

- Based upon Din Standard 648.
- PTFE Liner gives this Rod End self lubricating properties with excellent chemical and corrosion resistance.
- If a left hand thread is required the suffix 'L' should be added to the part number e.g. REFPMN10L

Part No.	P Deg.	Dynamic Load kN	Static Load kN	Weight (gm)
REFPMN06	13	3.6	8.15	21
REFPMN08	15	5.85	12.9	39
REFPMN10	12	8.65	17.6	61
REFPMN12	11	11.4	24.5	96
REFPMN15	8	17.6	36	180
REFPMN17	10	22.4	45	220
REFPMN20	9	31.5	60	350
REFPMN25	7	51	83	640
REFPMN30	6	66.5	110	930

RollerTek Ltd  
 47 Southalls Way  
 Norwich  
 NR3 4SA  
 Phone: 01603 926326  
 E-mail: mark@rollertek.co.uk  
 Web: www.rollertek.co.uk

Co. Reg. No. 6691519  
 VAT Reg. No. 944 7714 93