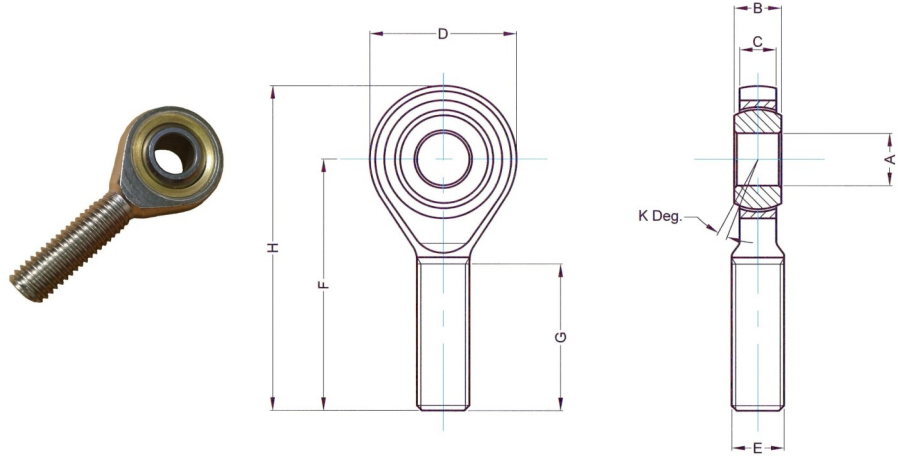


# Male PTFE Rod End DIN648 Data Sheet

## REMPM Male PTFE Rod End



Part No.	A H7	B	C	D	E	F	G	H	K Deg.	Load kN Dynamic	Load kN Static
REMPMN06	6	6	4.4	21	M6x1.0	36	18	46.5	13	3.6	8.15
REMPMN08	8	8	6	24	M8x1.25	42	22	54	15	5.85	12.9
REMPMN10	10	9	7	29	M10x1.5	48	26	62.5	12	8.65	17.6
REMPMN12	12	10	8	34	M12x1.75	54	28	71	11	11.4	24.5
REMPMN15	15	12	10	40	M14x2.0	64	34	83	8	17.6	36
REMPMN17	17	14	11	46	M16x2.0	69	36	92	10	22.4	45
REMPMN20	20	16	13	53	M20x1.5	78	43	104.5	9	31.5	60
REMPMN25	25	20	17	64	M24x2.0	94	53	126	7	51	83
REMPMN30	30	22	19	73	M20x2.0	110	65	146.5	6	66.5	110

Material:  
Housing AISI 1045 Carbon Steel.  
Race Housing H62 Brass.  
Ball AISI 52100 Bearing Steel.

Protective Finish:  
Zinc plated and passivated, RoHS Compliant.

- PTFE Liner gives this Rod End self lubricating properties with excellent chemical and corrosion resistance.
- If a left hand thread is required the suffix 'L' should be added to the part number e.g. REMPMNL10.

RollerTek Ltd  
47 Southalls Way  
Norwich  
NR3 4SA  
Phone: 01603 926326  
E-mail: mark@rollertek.co.uk  
Web: www.rollertek.co.uk

Co. Reg. No. 6691519  
VAT Reg. No. 944 7714 93