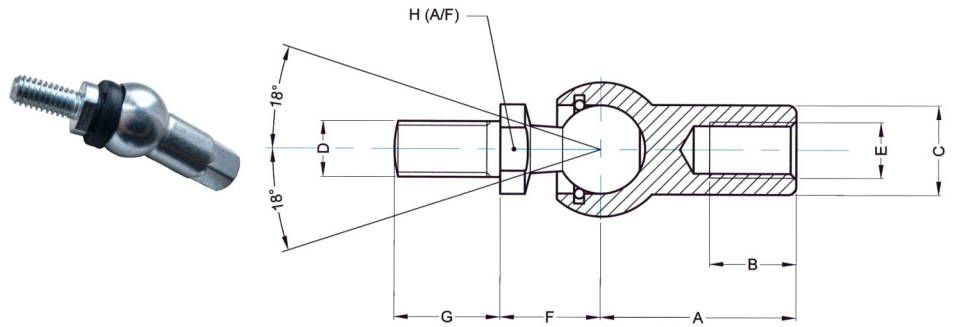


Axial Ball Joint Data Sheet

ABJ Ball Joint



Part No.	A	B Min.	C	D	E	F	G	H	Ball Dia.	Extraction Force (N)
ABJM05	22	10.2	8	M5x0.8	M5x 0.8	9	10.2	7	8	30
ABJM06	25	11.5	10	M6x1.0	M6x1.0	11	12.5	8	10	40
ABJM08	30	14	13	M8x1.25	M8x1.25	13	16.5	11	13	60
ABJM10	35	15.5	16	M10x1.5	M10x1.5	16	20	13	16	80
ABJM12	35	15.5	16	M12x1.75	M12x1.75	16	20	13	16	80
ABJM14	45	21.5	19	M14x1.5	M14x1.5	20	28	16	19	100

Material:

Ball stud AISI 1045 Carbon Steel, induction hardened.

Housing AISI 1035 Carbon Steel.

Inner retaining ring hard drawn spring steel.

Protective Finish:

Trivalent Zinc plated and passivated. Ball stud and inner retaining ring are de-embrittled.

The assembly is lubricated.

RoHS Compliant.

- Based upon Din Standard 71802.
- The ball stud is retained by a captive internal wire ring.
- For improved wear resistance, the ball is induction hardened.
- If a fitted gaiter is required then the suffix 'G' should be added to the part number e.g. ABJMG10.

RollerTek Ltd
 47 Southalls Way
 Norwich
 NR3 4SA
 Phone: 01603 926326
 E-mail: mark@rollertek.co.uk
 Web: www.rollertek.co.uk

Co. Reg. No. 6691519
 VAT Reg. No. 944 7714 93